



Approvals	Date
QUALITY CONTROL ENGINEER	7/2/18
CONSTRUCTION MANAGEMENT SUPERVISOR	5/1/18
WATER, SEWER, STREETS BUREAU CHIEF	8/3/18
TRANSPORTATION DIRECTOR	7/2/18
PROJECT MANAGER	7/2/18

REVISIONS	DATE

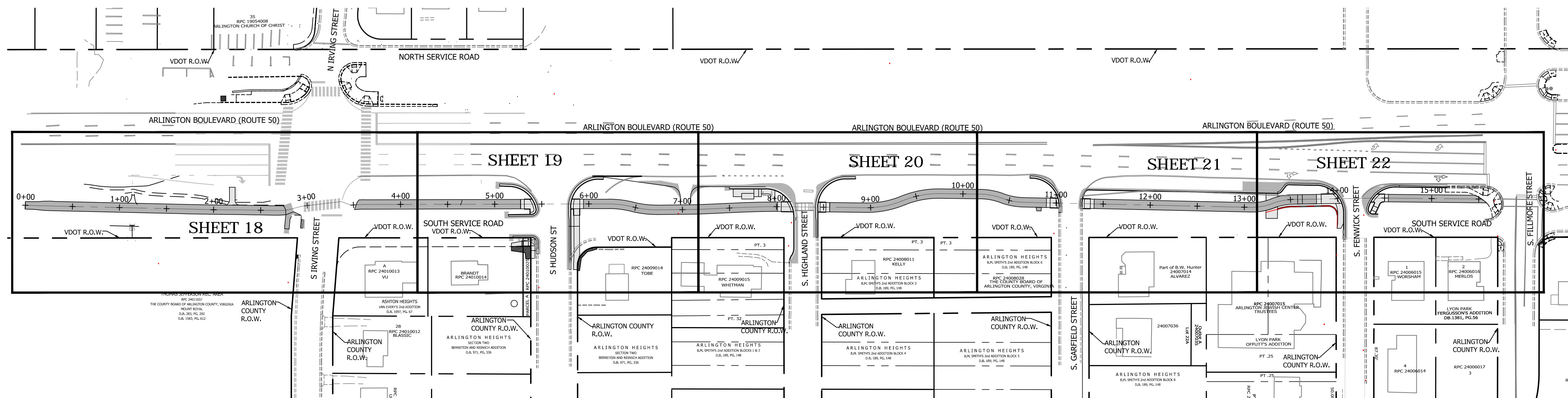
PROJECT NAME AND LOCATION
S IRVING ST/
ARLINGTON BLVD PHASE II
PROPOSED TRAIL PLAN OVERVIEW
ARLINGTON BLVD TRAIL
(S FILLMORE ST TO S IRVING ST)
N515

DESIGNED: VS/CB
DRAWN: VS/CB
CHECKED: MJT
MISS UTILITY TRANSMITTAL #: 5165

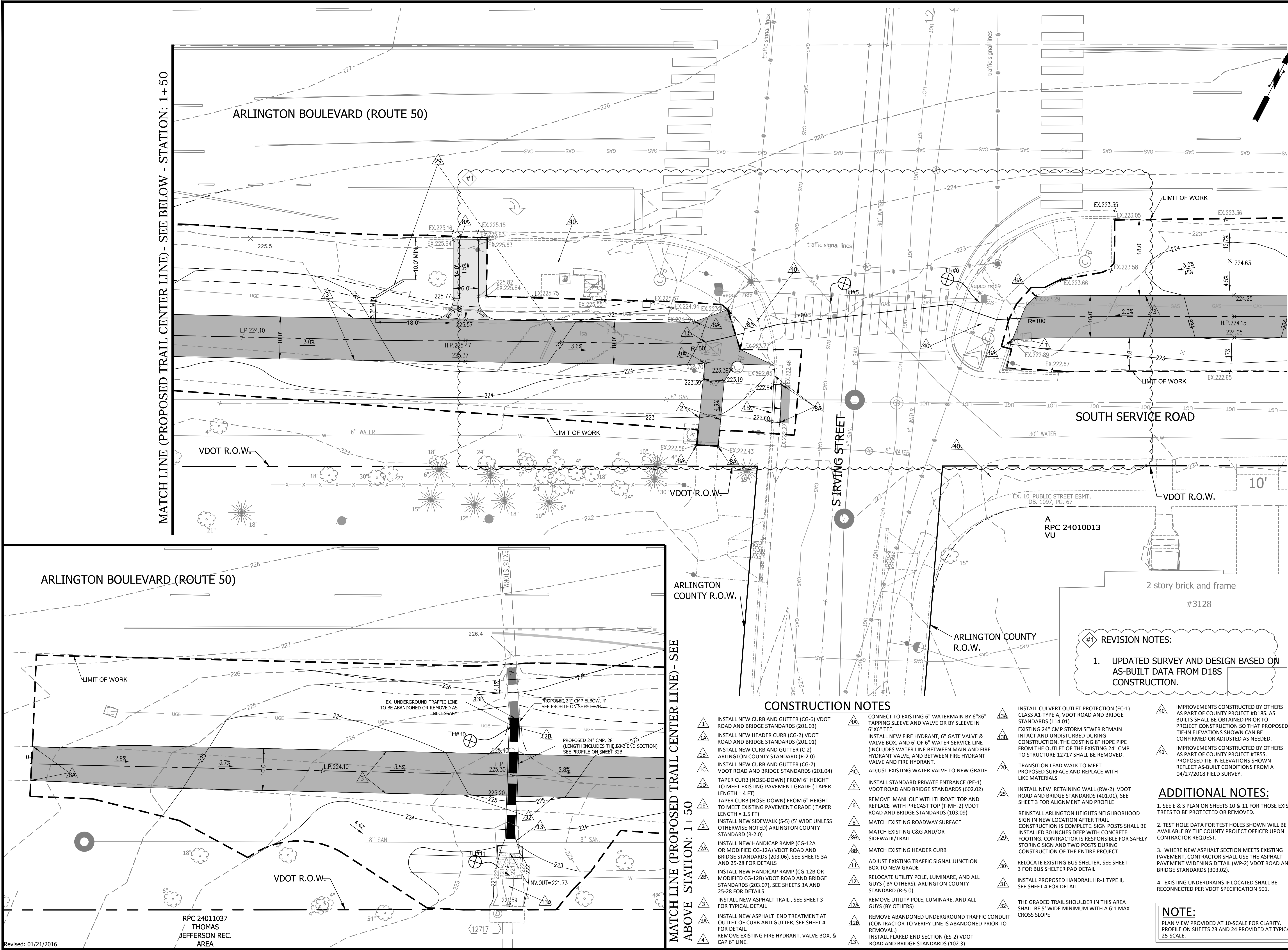
FILENAME: N515-OVERVIEW.DWG
PATH: \\DATA\\N515\\DESIGN\\DRAWINGS
PLOTTED: MARCH 27 2019
PLOTTED BY: JILIN

SCALE Hor: 1" = 60'
GRAPHIC SCALE
60 0 60
SCALE: 1" = 60'

SHEET 17 OF 38



THIS SHEET IS FOR INFORMATION ONLY.



DEPARTMENT OF ENVIRONMENTAL SERVICES
FACILITIES & ENGINEERING DIVISION
ENGINEERING BUREAU
2100 CLARENDON BOULEVARD, SUITE 813
ARLINGTON, VA 22201
PHONE: 703.228.3629
FAX: 703.228.3606

COPYRIGHT © 2016 ARLINGTON COUNTY VIRGINIA - ALL RIGHTS RESERVED



Approvals	Date
QUALITY CONTROL ENGINEER	4/5/19
CONSTRUCTION MANAGEMENT SUPERVISOR	4/10/19
WATER/SEWER REPORTS BUREAU CHIEF	4/10/19
TRANSPORTATION DIRECTOR	4/11/2019
PROJECT MANAGER	4/8/2019

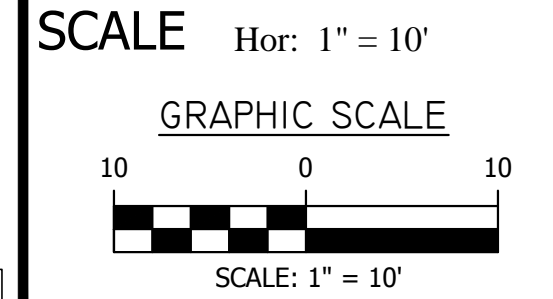
REVISIONS	DATE
#1	REVISION 1 11/6/18

PROJECT NAME AND LOCATION
S IRVING ST/
ARLINGTON BLVD PHASE II

PROPOSED TRAIL PLAN
ARLINGTON BLVD TRAIL
(S FILLMORE ST TO S IRVING ST)
N515

DESIGNED: VS/CB
DRAWN: VS/CB
CHECKED: MJT
MISS UTILITY TRANSMITTAL #: S165

FILENAME: N515-PD-PLAN.DWG
PATH: Q:\DATA\N515\DESIGN\DRAWINGS
PLOTTED: APRIL 17 2019
PLOTTED BY: JILIN



SHEET 18 OF 38

CONSTRUCTION NOTES

- INSTALL NEW CURB AND GUTTER (CG-6) VDOT ROAD AND BRIDGE STANDARDS (201.03)
- INSTALL NEW HEADER CURB (CG-2) VDOT ROAD AND BRIDGE STANDARDS (201.01)
- INSTALL NEW CURB AND GUTTER (C-2) ARLINGTON COUNTY STANDARD (R-2.0)
- INSTALL NEW CURB AND GUTTER (CG-7) VDOT ROAD AND BRIDGE STANDARDS (201.04)
- TAPER CURB (NOSE-DOWN) FROM 6" HEIGHT TO MEET EXISTING PAVEMENT GRADE (TAPER LENGTH = 4 FT)
- TAPER CURB (NOSE-DOWN) FROM 6" HEIGHT TO MEET EXISTING PAVEMENT GRADE (TAPER LENGTH = 1.5 FT)
- INSTALL NEW SIDEWALK (S-5) 15' WIDE UNLESS OTHERWISE NOTED) ARLINGTON COUNTY STANDARD (R-2.0)
- INSTALL NEW HANDICAP RAMP (CG-12A OR MODIFIED CG-12A) VDOT ROAD AND BRIDGE STANDARDS (203.06), SEE SHEETS 3A AND 25-28 FOR DETAILS
- INSTALL NEW HANDICAP RAMP (CG-12B OR MODIFIED CG-12B) VDOT ROAD AND BRIDGE STANDARDS (203.07), SEE SHEETS 3A AND 25-28 FOR DETAILS
- INSTALL NEW ASPHALT TRAIL, SEE SHEET 3 FOR TYPICAL DETAIL
- INSTALL NEW ASPHALT END TREATMENT AT OUTLET OF CURB AND GUTTER, SEE SHEET 4 FOR DETAIL
- REMOVE EXISTING FIRE HYDRANT, VALVE BOX, & CAP 6" LINE.
- CONNECT TO EXISTING 6" WATERMAIN BY 6"x6" TAPPING SLEEVE AND VALVE OR BY SLEEVE IN 6"x6" TEE.
- INSTALL NEW FIRE HYDRANT, 6" GATE VALVE & VALVE BOX, AND 6" OF 6" WATER SERVICE LINE (INCLUDES WATER LINE BETWEEN MAIN AND FIRE HYDRANT VALVE, AND BETWEEN FIRE HYDRANT VALVE AND FIRE HYDRANT.
- ADJUST EXISTING WATER VALVE TO NEW GRADE
- INSTALL STANDARD PRIVATE ENTRANCE (PE-1) VDOT ROAD AND BRIDGE STANDARDS (602.02)
- REMOVE 'MANHOLE WITH THROAT' TOP AND REPLACE WITH PRECAST TOP (T-MH-2) VDOT ROAD AND BRIDGE STANDARDS (103.09)
- MATCH EXISTING ROADWAY SURFACE
- MATCH EXISTING C&G AND/OR SIDEWALK/TRAIL
- MATCH EXISTING HEADER CURB
- ADJUST EXISTING TRAFFIC SIGNAL JUNCTION BOX TO NEW GRADE
- RELOCATE UTILITY POLE, LUMINARE, AND ALL GUYS (BY OTHERS), ARLINGTON COUNTY STANDARD (R-5.0)
- REMOVE UTILITY POLE, LUMINARE, AND ALL GUYS (BY OTHERS)
- REMOVE ABANDONED UNDERGROUND TRAFFIC CONDUIT (CONTRACTOR TO VERIFY LINE IS ABANDONED PRIOR TO REMOVAL)
- INSTALL FLARED END SECTION (ES-2) VDOT ROAD AND BRIDGE STANDARDS (102.3)
- INSTALL CULVERT OUTLET PROTECTION (EC-1) CLASS A1-TYPE A, VDOT ROAD AND BRIDGE STANDARDS (114.01)
- EXISTING 24" CMP STORM SEWER REMAIN INTACT AND UNDISTURBED DURING CONSTRUCTION. THE EXISTING 8" HDPE PIPE FROM THE OUTLET OF THE EXISTING 24" CMP TO STRUCTURE 12717 SHALL BE REMOVED.
- TRANSITION LEAD WALK TO MEET PROPOSED SURFACE AND REPLACE WITH LIKE MATERIALS
- INSTALL NEW RETAINING WALL (RW-2) VDOT ROAD AND BRIDGE STANDARDS (401.01), SEE SHEET 3 FOR ALIGNMENT AND PROFILE
- REINSTALL ARLINGTON HEIGHTS NEIGHBORHOOD SIGN IN NEW LOCATION AFTER TRAIL CONSTRUCTION IS COMPLETE. SIGN POSTS SHALL BE INSTALLED 30 INCHES DEEP WITH CONCRETE FOOTING. CONTRACTOR IS RESPONSIBLE FOR SAFELY STORING SIGN AND TWO POSTS DURING CONSTRUCTION OF THE ENTIRE PROJECT.
- RELOCATE EXISTING BUS SHELTER, SEE SHEET 3 FOR BUS SHELTER PAD DETAIL
- INSTALL PROPOSED HANDRAIL HR-1 TYPE II, SEE SHEET 4 FOR DETAIL.
- THE GRADED TRAIL SHOULDER IN THIS AREA SHALL BE 5' WIDE MINIMUM WITH A 6:1 MAX CROSS SLOPE
- IMPROVEMENTS CONSTRUCTED BY OTHERS AS PART OF COUNTY PROJECT #D185. AS BUILTS SHALL BE OBTAINED PRIOR TO PROJECT CONSTRUCTION SO THAT PROPOSED TIE-IN ELEVATIONS SHOWN CAN BE CONFIRMED OR ADJUSTED AS NEEDED.
- IMPROVEMENTS CONSTRUCTED BY OTHERS AS PART OF COUNTY PROJECT #T855. PROPOSED TIE-IN ELEVATIONS SHOWN REFLECT AS-BUILT CONDITIONS FROM A 04/27/2018 FIELD SURVEY.

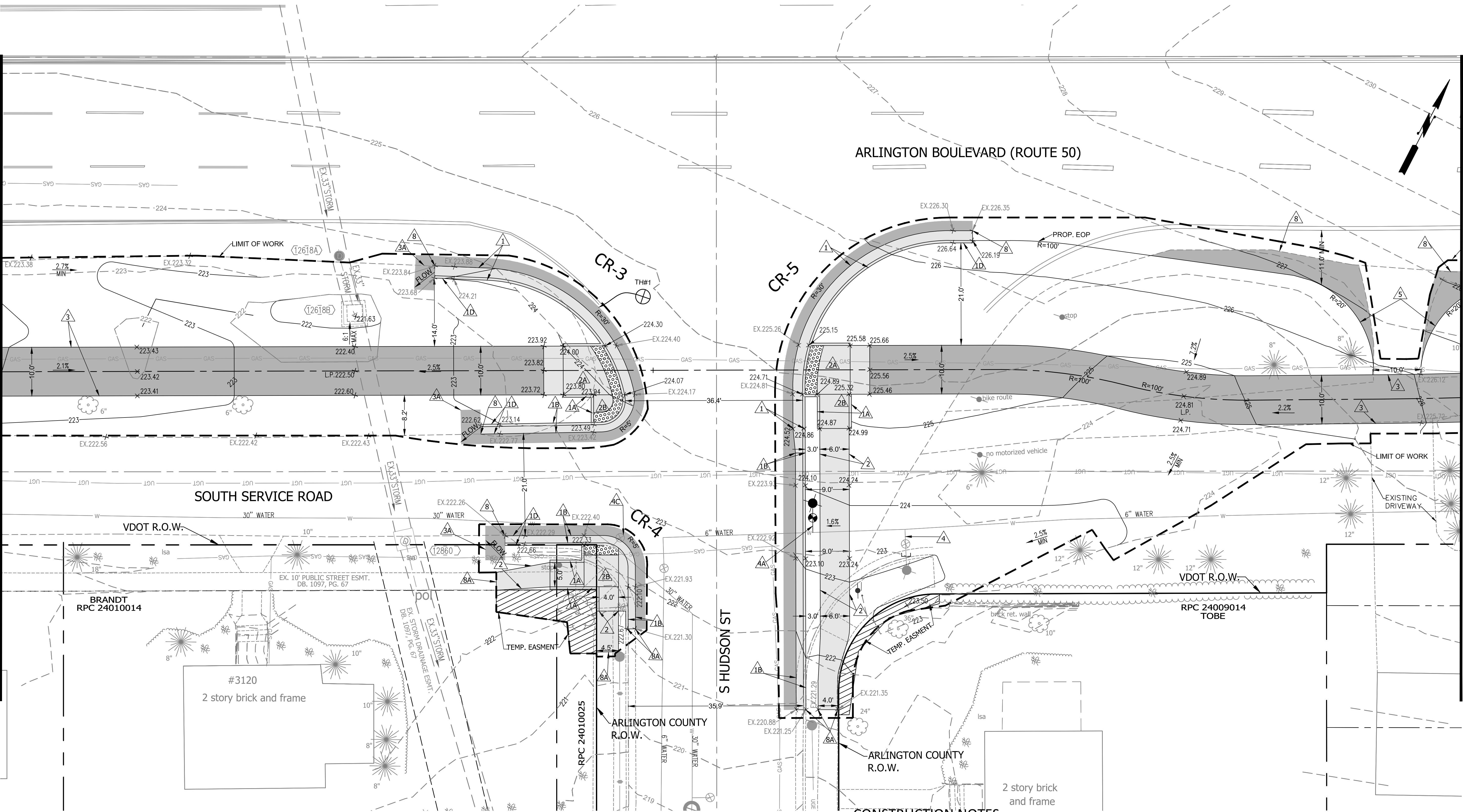
ADDITIONAL NOTES:

- SEE E & S PLAN ON SHEETS 10 & 11 FOR THOSE EXISTING TREES TO BE PROTECTED OR REMOVED.
- TEST HOLE DATA FOR TEST HOLES SHOWN WILL BE MADE AVAILABLE BY THE COUNTY PROJECT OFFICER UPON CONTRACTOR REQUEST.
- WHERE NEW ASPHALT SECTION MEETS EXISTING PAVEMENT, CONTRACTOR SHALL USE THE ASPHALT PAVEMENT WIDENING DETAIL (WP-2) VDOT ROAD AND BRIDGE STANDARDS (303.02).
- EXISTING UNDERDRAINS IF LOCATED SHALL BE RECONNECTED PER VDOT SPECIFICATION 501.

NOTE:

PLAN VIEW PROVIDED AT 10-SCALE FOR CLARITY. PROFILE ON SHEETS 23 AND 24 PROVIDED AT TYPICAL 25-SCALE.

MATCH LINE (PROPOSED TRAIL CENTER LINE) - SEE SHEET 18 - STATION: 4+17



CONSTRUCTION NOTES

1. INSTALL NEW CURB AND GUTTER (CG-6) VDOT ROAD AND BRIDGE STANDARDS (201.03)
- 1A. INSTALL NEW HEADER CURB (CG-2) VDOT ROAD AND BRIDGE STANDARDS (201.01)
- 1B. INSTALL NEW CURB AND GUTTER (C-2) ARLINGTON COUNTY STANDARD (R-2.0)
- 1C. INSTALL NEW CURB AND GUTTER (CG-7) VDOT ROAD AND BRIDGE STANDARDS (201.04)
- 1D. TAPER CURB (NOSE-DOWN) FROM 6" HEIGHT TO MEET EXISTING PAVEMENT GRADE (TAPER LENGTH = 4 FT)
- 1E. TAPER CURB (NOSE-DOWN) FROM 6" HEIGHT TO MEET EXISTING PAVEMENT GRADE (TAPER LENGTH = 1.5 FT)
2. INSTALL NEW SIDEWALK (S-5) (5' WIDE UNLESS OTHERWISE NOTED) ARLINGTON COUNTY STANDARD (R-2.0)
- 2A. INSTALL NEW HANDICAP RAMP (CG-12A OR MODIFIED CG-12A) VDOT ROAD AND BRIDGE STANDARDS (203.06), SEE SHEETS 3A AND 25-28 FOR DETAILS
- 2B. INSTALL NEW HANDICAP RAMP (CG-12B OR MODIFIED CG-12B) VDOT ROAD AND BRIDGE STANDARDS (203.07), SEE SHEETS 3A AND 25-28 FOR DETAILS
3. INSTALL NEW ASPHALT TRAIL, SEE SHEET 3 FOR TYPICAL DETAIL
- 3A. INSTALL NEW ASPHALT END TREATMENT AT OUTLET OF CURB AND GUTTER, SEE SHEET 4 FOR DETAIL
4. REMOVE EXISTING FIRE HYDRANT, VALVE BOX, & CAP 6" LINE.
- 4A. CONNECT TO EXISTING 6" WATERMAIN BY 6"x6" TAPPING SLEEVE AND VALVE OR BY SLEEVE IN 6"x6" TEE.
5. INSTALL NEW FIRE HYDRANT, 6" GATE VALVE & VALVE BOX, AND 6" OF 6" WATER SERVICE LINE (INCLUDES WATER LINE BETWEEN MAIN AND FIRE HYDRANT VALVE, AND BETWEEN FIRE HYDRANT VALVE AND FIRE HYDRANT).
6. ADJUST EXISTING WATER VALVE TO NEW GRADE
- 6A. INSTALL STANDARD PRIVATE ENTRANCE (PE-1) VDOT ROAD AND BRIDGE STANDARDS (602.02)
- 6B. REMOVE 'MANHOLE WITH THROAT' TOP AND REPLACE WITH PRECAST TOP (T-MH-2) VDOT ROAD AND BRIDGE STANDARDS (103.09)
8. MATCH EXISTING ROADWAY SURFACE
- 8A. MATCH EXISTING C&G AND/OR SIDEWALK/TRAIL
- 8B. MATCH EXISTING HEADER CURB
11. ADJUST EXISTING TRAFFIC SIGNAL JUNCTION BOX TO NEW GRADE
12. RELOCATE UTILITY POLE, LUMINARE, AND ALL GUY'S (BY OTHERS), ARLINGTON COUNTY STANDARD (R-5.0)
- 12A. REMOVE UTILITY POLE, LUMINARE, AND ALL GUY'S (BY OTHERS)
- 12B. RELOCATE UNDERGROUND ELECTRICAL LINE (BY OTHERS)
13. INSTALL FLARED END SECTION (ES-2) VDOT ROAD AND BRIDGE STANDARDS (102.3)
- 13A. INSTALL CULVERT OUTLET PROTECTION (EC-1) CLASS A1-TYPE A, VDOT ROAD AND BRIDGE STANDARDS (114.01)
- 13B. EXISTING 24" CMP STORM SEWER REMAIN INTACT AND UNDISTURBED DURING CONSTRUCTION. THE EXISTING 8" HDPE PIPE FROM THE OUTLET OF THE EXISTING 24" CMP TO STRUCTURE 12717 SHALL BE REMOVED.
20. TRANSITION LEAD WALK TO MEET PROPOSED SURFACE AND REPLACE WITH LIKE MATERIALS
25. INSTALL NEW RETAINING WALL (RW-2) VDOT ROAD AND BRIDGE STANDARDS (401.01), SEE SHEET 3 FOR ALIGNMENT AND PROFILE
29. REINSTALL ARLINGTON HEIGHTS NEIGHBORHOOD SIGN IN NEW LOCATION AFTER TRAIL CONSTRUCTION IS COMPLETE. SIGN POSTS SHALL BE INSTALLED 30 INCHES DEEP WITH CONCRETE FOOTING. CONTRACTOR IS RESPONSIBLE FOR SAFELY STORING SIGN AND TWO POSTS DURING CONSTRUCTION OF THE ENTIRE PROJECT.
30. RELOCATE EXISTING BUS SHELTER, SEE SHEET 3 FOR BUS SHELTER PAD DETAIL
31. INSTALL PROPOSED HANDRAIL HR-1 TYPE II, SEE SHEET 4 FOR DETAIL.
32. THE GRADED TRAIL SHOULDER IN THIS AREA SHALL BE 5' WIDE MINIMUM WITH A 6:1 MAX CROSS SLOPE
40. IMPROVEMENTS CONSTRUCTED BY OTHERS AS PART OF COUNTY PROJECT #D185. AS BUILTS SHALL BE OBTAINED PRIOR TO PROJECT CONSTRUCTION SO THAT PROPOSED TIE-IN ELEVATIONS SHOWN CAN BE CONFIRMED OR ADJUSTED AS NEEDED.
41. IMPROVEMENTS CONSTRUCTED BY OTHERS AS PART OF COUNTY PROJECT #T855. PROPOSED TIE-IN ELEVATIONS SHOWN REFLECT AS-BUILT CONDITIONS FROM A 04/27/2018 FIELD SURVEY.

ADDITIONAL NOTES:

1. SEE E & S PLAN ON SHEETS 10 & 11 FOR THOSE EXISTING TREES TO BE PROTECTED OR REMOVED.
2. TEST HOLE DATA FOR TEST HOLES SHOWN WILL BE MADE AVAILABLE BY THE COUNTY PROJECT OFFICER UPON CONTRACTOR REQUEST.
3. WHERE NEW ASPHALT SECTION MEETS EXISTING PAVEMENT, CONTRACTOR SHALL USE THE ASPHALT PAVEMENT WIDENING DETAIL (WP-2) VDOT ROAD AND BRIDGE STANDARDS (303.02).
4. EXISTING UNDERDRAINS IF LOCATED SHALL BE RECONNECTED PER VDOT SPECIFICATION 501.

NOTE:

PLAN VIEW PROVIDED AT 10-SCALE FOR CLARITY. PROFILE ON SHEETS 23 AND 24 PROVIDED AT TYPICAL 25-SCALE.



ARLINGTON
VIRGINIA

DEPARTMENT OF
ENVIRONMENTAL SERVICES

FACILITIES & ENGINEERING DIVISION
ENGINEERING BUREAU
2100 CLARENDON BOULEVARD, SUITE 813
ARLINGTON, VA 22201
PHONE: 703.228.3629
FAX: 703.228.3606

COPYRIGHT © 2016 ARLINGTON COUNTY VIRGINIA - ALL RIGHTS RESERVED



Approvals _____ Date _____

QUALITY CONTROL ENGINEER _____ 8/1/18

CONSTRUCTION MANAGEMENT SUPERVISOR _____ 8/3/18

WATER, SEWER, STREETS BUREAU CHIEF _____ 8/1/18

TRANSPORTATION DIRECTOR _____ 7/2/18

PROJECT MANAGER _____

REVISIONS _____ DATE _____

REVISIONS	DATE

PROJECT NAME AND LOCATION
S IRVING ST/
ARLINGTON BLVD PHASE II

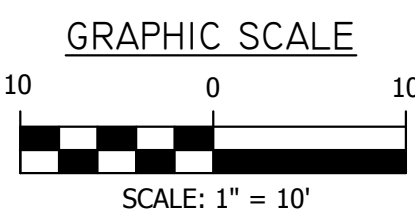
PROPOSED TRAIL PLAN

ARLINGTON BLVD TRAIL
(S FILLMORE ST TO S IRVING ST)
N515

DESIGNED: VS/CB
DRAWN: VS/CB
CHECKED: MJT
MISS UTILITY TRANSMITTAL #: 5165

FILENAME: N515-PD-PLAN.DWG
PATH: \\C:\DATA\N515\DESIGN\DRAWINGS
PLOTTED: MARCH 29 2019
PLOTTED BY: JILIN

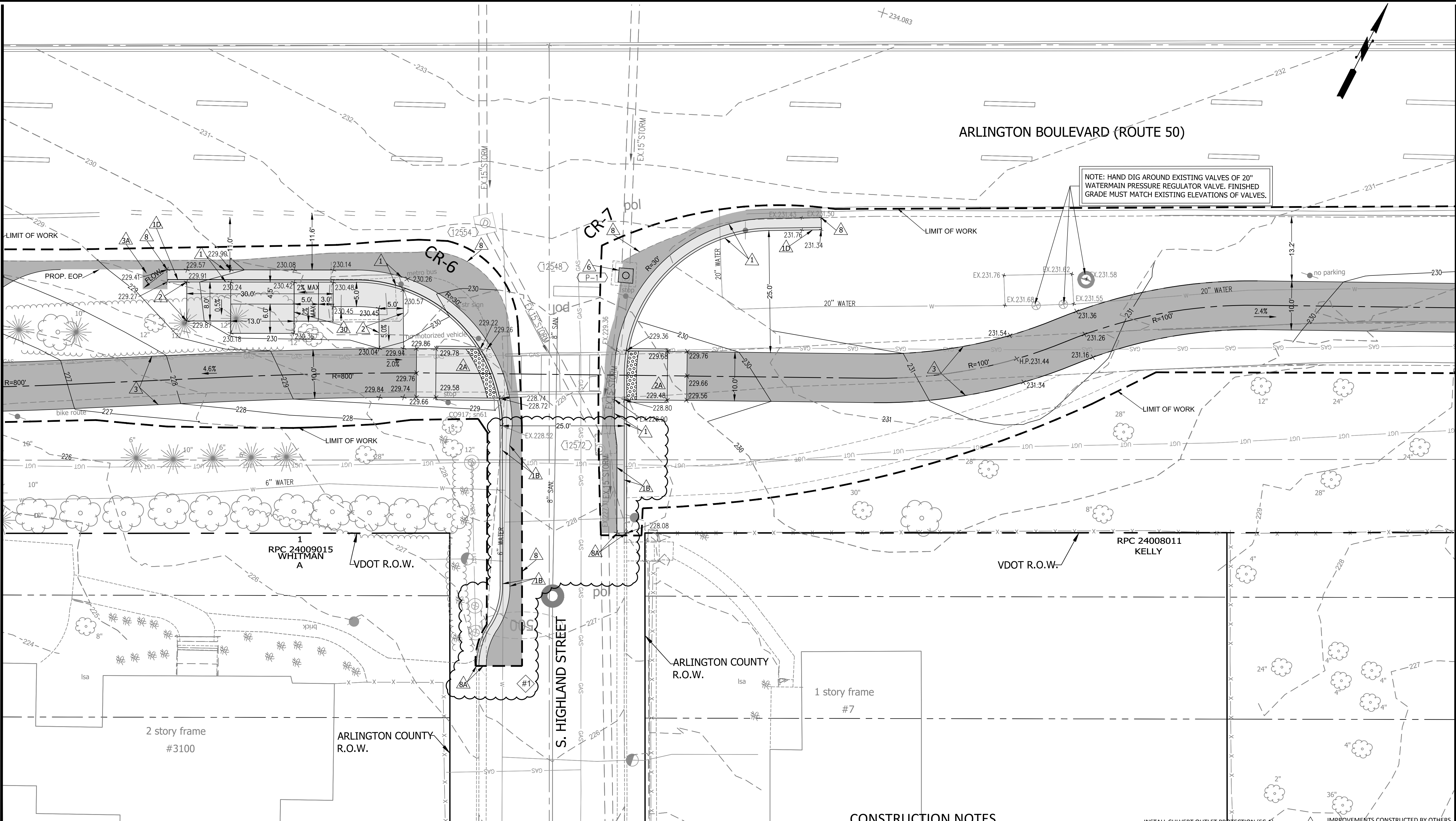
SCALE Hor: 1" = 10'



SHEET 19 OF 38

S IRVING ST PHASE II - N515

MATCH LINE (PROPOSED TRAIL CENTER LINE) - SEE SHEET 19 - STATION: 7+16



- #1 REVISION NOTES:
1. CONNECTED CURB FROM PT AT THE SOUTHWEST CORNER OF ARLINGTON BLVD AND S HIGHLAND ST TO EX. CURB AND GUTTER ON S. HIGHLAND STREET.

CONSTRUCTION NOTES

- #1A INSTALL NEW CURB AND GUTTER (CG-6) VDOT ROAD AND BRIDGE STANDARDS (201.03)
- #1B INSTALL NEW HEADER CURB (CG-2) VDOT ROAD AND BRIDGE STANDARDS (201.01)
- #1C INSTALL NEW CURB AND GUTTER (C-2) ARLINGTON COUNTY STANDARD (R-2.0)
- #1D INSTALL NEW CURB AND GUTTER (CG-7) VDOT ROAD AND BRIDGE STANDARDS (201.04)
- #1E TAPER CURB (NOSE-DOWN) FROM 6\" HEIGHT TO MEET EXISTING PAVEMENT GRADE (TAPER LENGTH = 4 FT)
- #1F TAPER CURB (NOSE-DOWN) FROM 6\" HEIGHT TO MEET EXISTING PAVEMENT GRADE (TAPER LENGTH = 1.5 FT)
- #2 INSTALL NEW SIDEWALK (S-5) 5\" WIDE UNLESS OTHERWISE NOTED) ARLINGTON COUNTY STANDARD (R-2.0)
- #2A INSTALL NEW HANDICAP RAMP (CG-12A OR MODIFIED CG-12A) VDOT ROAD AND BRIDGE STANDARDS (203.06), SEE SHEETS 3A AND 25-28 FOR DETAILS
- #2B INSTALL NEW HANDICAP RAMP (CG-12B OR MODIFIED CG-12B) VDOT ROAD AND BRIDGE STANDARDS (203.07), SEE SHEETS 3A AND 25-28 FOR DETAILS
- #3 INSTALL NEW ASPHALT TRAIL, SEE SHEET 3 FOR TYPICAL DETAIL
- #3A INSTALL NEW ASPHALT END TREATMENT AT OUTLET OF CURB AND GUTTER, SEE SHEET 4 FOR DETAIL
- #4 REMOVE EXISTING FIRE HYDRANT, VALVE BOX, & CAP 6\" LINE.
- #4A CONNECT TO EXISTING 6\" WATERMAIN BY 6\"X6\" TAPPING SLEEVE AND VALVE OR BY SLEEVE IN 6\"X6\" TEE.
- #4B INSTALL NEW FIRE HYDRANT, 6\" GATE VALVE & VALVE BOX, AND 6\" OF 6\" WATER SERVICE LINE (INCLUDES WATER LINE BETWEEN MAIN AND FIRE HYDRANT VALVE, AND BETWEEN FIRE HYDRANT VALVE AND FIRE HYDRANT.
- #4C ADJUST EXISTING WATER VALVE TO NEW GRADE
- #5 INSTALL STANDARD PRIVATE ENTRANCE (PE-1) VDOT ROAD AND BRIDGE STANDARDS (602.02)
- #6 REMOVE 'MANHOLE WITH THROAT' TOP AND REPLACE WITH PRECAST TOP (T-MH-2) VDOT ROAD AND BRIDGE STANDARDS (103.09)
- #8 MATCH EXISTING ROADWAY SURFACE
- #8A MATCH EXISTING C&G AND/OR SIDEWALK/TRAIL
- #8B MATCH EXISTING HEADER CURB
- #11 ADJUST EXISTING TRAFFIC SIGNAL JUNCTION BOX TO NEW GRADE
- #12 RELOCATE UTILITY POLE, LUMINARE, AND ALL GUYS (BY OTHERS). ARLINGTON COUNTY STANDARD (R-5.0)
- #12A REMOVE UTILITY POLE, LUMINARE, AND ALL GUYS (BY OTHERS)
- #12B RELOCATE UNDERGROUND ELECTRICAL LINE (BY OTHERS)
- #13 INSTALL FLARED END SECTION (ES-2) VDOT ROAD AND BRIDGE STANDARDS (102.3)
- #13A INSTALL CULVERT OUTLET PROTECTION (EC-1) CLASS A1-TYPE A, VDOT ROAD AND BRIDGE STANDARDS (114.01)
- #13B EXISTING 24\" CMP STORM SEWER REMAIN INTACT AND UNDISTURBED DURING CONSTRUCTION. THE EXISTING 8\" HDPE PIPE FROM THE OUTLET OF THE EXISTING 24\" CMP TO STRUCTURE 12717 SHALL BE REMOVED.
- #20 TRANSITION LEAD WALK TO MEET PROPOSED SURFACE AND REPLACE WITH LIKE MATERIALS
- #25 INSTALL NEW RETAINING WALL (RW-2) VDOT ROAD AND BRIDGE STANDARDS (401.01), SEE SHEET 3 FOR ALIGNMENT AND PROFILE
- #29 REINSTALL ARLINGTON HEIGHTS NEIGHBORHOOD SIGN IN NEW LOCATION AFTER TRAIL CONSTRUCTION IS COMPLETE. SIGN POSTS SHALL BE INSTALLED 30 INCHES DEEP WITH CONCRETE FOOTING. CONTRACTOR IS RESPONSIBLE FOR SAFELY STORING SIGN AND TWO POSTS DURING CONSTRUCTION OF THE ENTIRE PROJECT.
- #30 RELOCATE EXISTING BUS SHELTER, SEE SHEET 3 FOR BUS SHELTER PAD DETAIL
- #31 RELOCATE UTILITY POLE, LUMINARE, AND ALL GUYS (BY OTHERS)
- #32 THE GRADED TRAIL SHOULDER IN THIS AREA SHALL BE 5\" WIDE MINIMUM WITH A 6:1 MAX CROSS SLOPE
- #40 IMPROVEMENTS CONSTRUCTED BY OTHERS AS PART OF COUNTY PROJECT #D185. AS BUILTS SHALL BE OBTAINED PRIOR TO PROJECT CONSTRUCTION SO THAT PROPOSED TIE-IN ELEVATIONS SHOWN CAN BE CONFIRMED OR ADJUSTED AS NEEDED.
- #41 IMPROVEMENTS CONSTRUCTED BY OTHERS AS PART OF COUNTY PROJECT #T855. PROPOSED TIE-IN ELEVATIONS SHOWN REFLECT AS-BUILT CONDITIONS FROM A 04/27/2018 FIELD SURVEY.

ADDITIONAL NOTES:

1. SEE E & S PLAN ON SHEETS 10 & 11 FOR THOSE EXISTING TREES TO BE PROTECTED OR REMOVED.
2. TEST HOLE DATA FOR TEST HOLES SHOWN WILL BE MADE AVAILABLE BY THE COUNTY PROJECT OFFICER UPON CONTRACTOR REQUEST.
3. WHERE NEW ASPHALT SECTION MEETS EXISTING PAVEMENT, CONTRACTOR SHALL USE THE ASPHALT PAVEMENT WIDENING DETAIL (WP-2) VDOT ROAD AND BRIDGE STANDARDS (303.02).
4. EXISTING UNDERDRAINS IF LOCATED SHALL BE RECONNECTED PER VDOT SPECIFICATION 501.

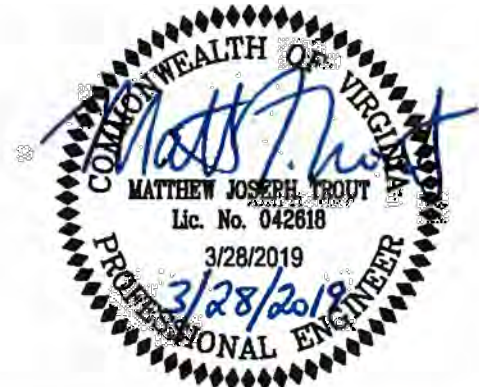
NOTE:

PLAN VIEW PROVIDED AT 10-SCALE FOR CLARITY. PROFILE ON SHEETS 23 AND 24 PROVIDED AT TYPICAL 25-SCALE.



DEPARTMENT OF ENVIRONMENTAL SERVICES
FACILITIES & ENGINEERING DIVISION
ENGINEERING BUREAU
2100 CLARENDON BOULEVARD, SUITE 813
ARLINGTON, VA 22201
PHONE: 703.228.3629
FAX: 703.228.3606

COPYRIGHT © 2016 ARLINGTON COUNTY VIRGINIA - ALL RIGHTS RESERVED



Approvals Date
QUALITY CONTROL ENGINEER 4/6/19
CONSTRUCTION MANAGEMENT SUPERVISOR 4/10/19
WATER/SEWER STREETS BUREAU CHIEF 4/10/19
TRANSPORTATION DIRECTOR 4/11/2019
PROJECT MANAGER 4/8/2019

REVISIONS DATE

#1 REVISION 1 11/6/18

PROJECT NAME AND LOCATION

S IRVING ST/
ARLINGTON BLVD PHASE II

PROPOSED TRAIL PLAN

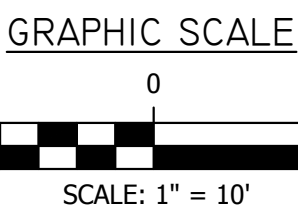
ARLINGTON BLVD TRAIL
(S FILLMORE ST TO S IRVING ST)

N515

DESIGNED: VS/CB
DRAWN: VS/CB
CHECKED: MJT
MISS UTILITY TRANSMITTAL #: 5165

FILENAME: N515-PD-PLAN.DWG
PATH: Q:\DATA\DESIGN\CONTRAMING
PLOTTED: APRIL 17 2019
PLOTTED BY: JILIN

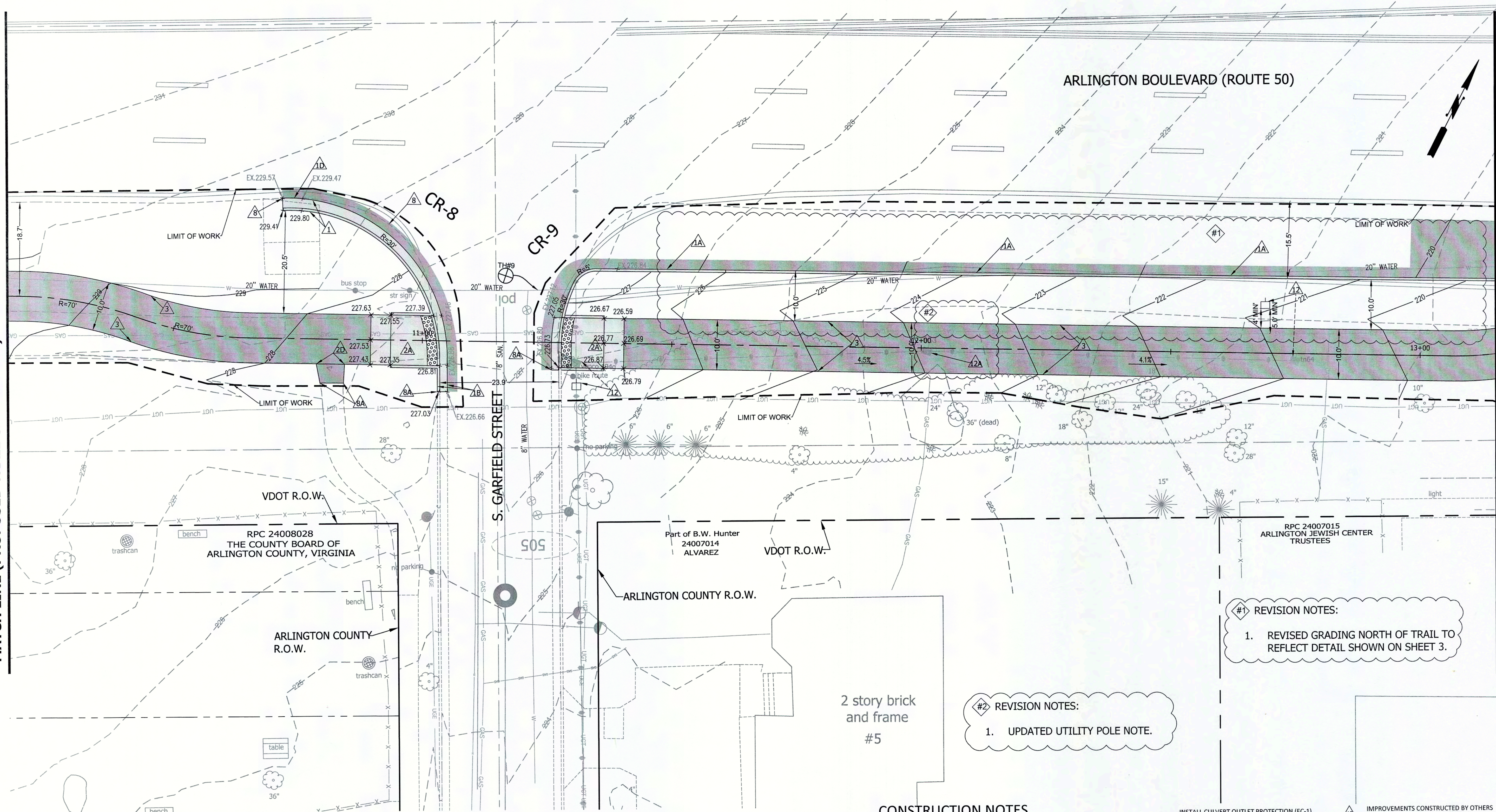
SCALE Hor: 1" = 10'



SHEET 20 OF 38

S IRVING ST PHASE II - N515

MATCH LINE (PROPOSED TRAIL CENTER LINE) - SEE SHEET 20 - STATION: 10+16



MATCH LINE (PROPOSED TRAIL CENTER LINE) - SEE SHEET 22 - STATION: 13+16



DEPARTMENT OF ENVIRONMENTAL SERVICES
FACILITIES & ENGINEERING DIVISION
ENGINEERING BUREAU
2100 CLARENDON BOULEVARD, SUITE 813
ARLINGTON, VA 22201
PHONE: 703.228.3629
FAX: 703.228.3606

COPYRIGHT © 2016 ARLINGTON COUNTY VIRGINIA - ALL RIGHTS RESERVED



Approvals	Date
QUALITY CONTROL ENGINEER	4/6/19
CONSTRUCTION MANAGEMENT SUPERVISOR	4/10/19
WATER/SEWER SERVICES BUREAU CHIEF	3/10/19
TRANSPORTATION DIRECTOR	3/11/2019
PROJECT MANAGER	6/17/19

REVISIONS	DATE
#1 REVISION 1	11/6/18
#2 REVISION 2	04/29/19

#1 REVISION NOTES:
1. REVISED GRADING NORTH OF TRAIL TO REFLECT DETAIL SHOWN ON SHEET 3.

#2 REVISION NOTES:
1. UPDATED UTILITY POLE NOTE.

CONSTRUCTION NOTES

- INSTALL NEW CURB AND GUTTER (CG-6) VDOT ROAD AND BRIDGE STANDARDS (201.03)
- INSTALL NEW HEADER CURB (CG-2) VDOT ROAD AND BRIDGE STANDARDS (201.01)
- INSTALL NEW CURB AND GUTTER (C-2) ARLINGTON COUNTY STANDARD (R-2.0)
- INSTALL NEW CURB AND GUTTER (CG-7) VDOT ROAD AND BRIDGE STANDARDS (201.04)
- TAPER CURB (NOSE-DOWN) FROM 6" HEIGHT TO MEET EXISTING PAVEMENT GRADE (TAPER LENGTH = 4 FT)
- TAPER CURB (NOSE-DOWN) FROM 6" HEIGHT TO MEET EXISTING PAVEMENT GRADE (TAPER LENGTH = 1.5 FT)
- INSTALL NEW SIDEWALK (S-5) (5' WIDE UNLESS OTHERWISE NOTED) ARLINGTON COUNTY STANDARD (R-2.0)
- INSTALL NEW HANDICAP RAMP (CG-12A OR MODIFIED CG-12B) VDOT ROAD AND BRIDGE STANDARDS (203.06), SEE SHEETS 3A AND 25-28 FOR DETAILS
- INSTALL NEW HANDICAP RAMP (CG-12B OR MODIFIED CG-12B) VDOT ROAD AND BRIDGE STANDARDS (203.07), SEE SHEETS 3A AND 25-28 FOR DETAILS
- INSTALL NEW ASPHALT TRAIL, SEE SHEET 3 FOR TYPICAL DETAIL
- INSTALL NEW ASPHALT END TREATMENT AT OUTLET OF CURB AND GUTTER, SEE SHEET 4 FOR DETAIL
- REMOVE EXISTING FIRE HYDRANT, VALVE BOX, & CAP 6" LINE.
- CONNECT TO EXISTING 6" WATERMAIN BY 6"x6" TAPPING SLEEVE AND VALVE OR BY SLEEVE IN 6"x6" TEE.
- INSTALL NEW FIRE HYDRANT, 6" GATE VALVE & VALVE BOX, AND 6" OF 6" WATER SERVICE LINE (INCLUDES WATER LINE BETWEEN MAIN AND FIRE HYDRANT VALVE, AND BETWEEN FIRE HYDRANT VALVE AND FIRE HYDRANT).
- ADJUST EXISTING WATER VALVE TO NEW GRADE
- INSTALL STANDARD PRIVATE ENTRANCE (PE-1) VDOT ROAD AND BRIDGE STANDARDS (602.02)
- REMOVE 'MANHOLE WITH THROAT' TOP AND REPLACE WITH PRECAST TOP (T-MH-2) VDOT ROAD AND BRIDGE STANDARDS (103.09)
- MATCH EXISTING ROADWAY SURFACE
- MATCH EXISTING C&G AND/OR SIDEWALK/TRAIL
- MATCH EXISTING HEADER CURB
- ADJUST EXISTING TRAFFIC SIGNAL JUNCTION BOX TO NEW GRADE
- RELOCATE UTILITY POLE, LUMINARE, AND ALL GUYS (BY OTHERS), ARLINGTON COUNTY STANDARD (R-5.0)
- REMOVE UTILITY POLE, LUMINARE, AND ALL GUYS (BY OTHERS)
- RELOCATE UNDERGROUND ELECTRICAL LINE (BY OTHERS)
- INSTALL FLARED END SECTION (ES-2) VDOT ROAD AND BRIDGE STANDARDS (102.3)
- INSTALL CULVERT OUTLET PROTECTION (EC-1) CLASS A1-TYPE A, VDOT ROAD AND BRIDGE STANDARDS (114.01)
- EXISTING 24" CMP STORM SEWER REMAIN INTACT AND UNDISTURBED DURING CONSTRUCTION. THE EXISTING 8" HDPE PIPE FROM THE OUTLET OF THE EXISTING 24" CMP TO STRUCTURE 12717 SHALL BE REMOVED.
- TRANSITION LEAD WALK TO MEET PROPOSED SURFACE AND REPLACE WITH LIKE MATERIALS
- INSTALL NEW RETAINING WALL (RW-2) VDOT ROAD AND BRIDGE STANDARDS (401.01), SEE SHEET 3 FOR ALIGNMENT AND PROFILE
- REINSTALL ARLINGTON HEIGHTS NEIGHBORHOOD SIGN IN NEW LOCATION AFTER TRAIL CONSTRUCTION IS COMPLETE. SIGN POSTS SHALL BE INSTALLED 30 INCHES DEEP WITH CONCRETE FOOTING. CONTRACTOR IS RESPONSIBLE FOR SAFELY STORING SIGN AND TWO POSTS DURING CONSTRUCTION OF THE ENTIRE PROJECT.
- RELOCATE EXISTING BUS SHELTER, SEE SHEET 3 FOR BUS SHELTER PAD DETAIL
- INSTALL PROPOSED HANDRAIL HR-1 TYPE II, SEE SHEET 4 FOR DETAIL.
- THE GRADED TRAIL SHOULDER IN THIS AREA SHALL BE 5' WIDE MINIMUM WITH A 6:1 MAX CROSS SLOPE
- IMPROVEMENTS CONSTRUCTED BY OTHERS AS PART OF COUNTY PROJECT #D185. AS BUILTS SHALL BE OBTAINED PRIOR TO PROJECT CONSTRUCTION SO THAT PROPOSED TIE-IN ELEVATIONS SHOWN CAN BE CONFIRMED OR ADJUSTED AS NEEDED.
- IMPROVEMENTS CONSTRUCTED BY OTHERS AS PART OF COUNTY PROJECT #T855. PROPOSED TIE-IN ELEVATIONS SHOWN REFLECT AS-BUILT CONDITIONS FROM A 04/27/2018 FIELD SURVEY.

ADDITIONAL NOTES:

- SEE E & S PLAN ON SHEETS 10 & 11 FOR THOSE EXISTING TREES TO BE PROTECTED OR REMOVED.
- TEST HOLE DATA FOR TEST HOLES SHOWN WILL BE MADE AVAILABLE BY THE COUNTY PROJECT OFFICER UPON CONTRACTOR REQUEST.
- WHERE NEW ASPHALT SECTION MEETS EXISTING PAVEMENT, CONTRACTOR SHALL USE THE ASPHALT PAVEMENT WIDENING DETAIL (WP-2) VDOT ROAD AND BRIDGE STANDARDS (303.02).
- EXISTING UNDERDRAINS IF LOCATED SHALL BE RECONNECTED PER VDOT SPECIFICATION 501.

NOTE:

PLAN VIEW PROVIDED AT 10-SCALE FOR CLARITY. PROFILE ON SHEETS 23 AND 24 PROVIDED AT TYPICAL 25-SCALE.

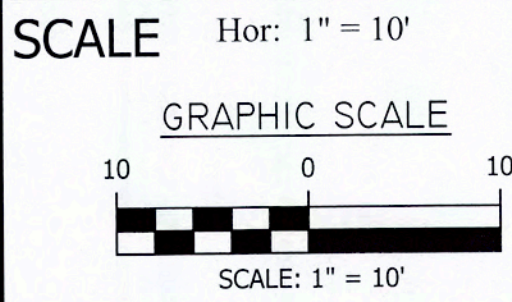
PROJECT NAME AND LOCATION

S IRVING ST/
ARLINGTON BLVD PHASE II

PROPOSED TRAIL PLAN

ARLINGTON BLVD TRAIL
(S FILLMORE ST TO S IRVING ST)

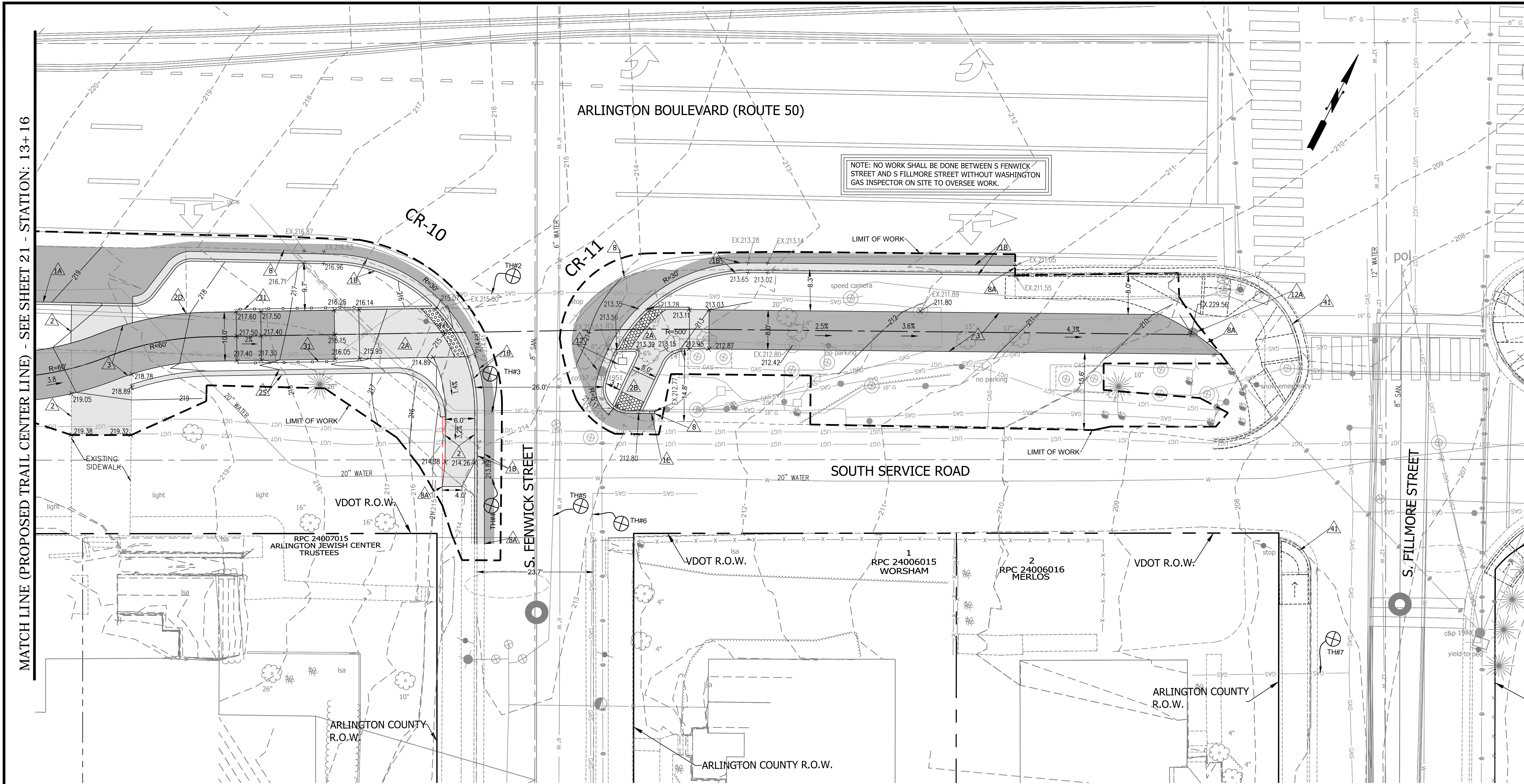
DESIGNED: VS/CB
DRAWN: VS/CB
CHECKED: MJT
MISS UTILITY TRANSMITTAL #: 5165
FILENAME: N515-PD-PLAN.DWG
PATH: Q:\DATA\N515\DESIGN\DRAWINGS
PLOTTED: JUNE 6 2019
PLOTTED BY: JILIN



SHEET 21 OF 38

S IRVING ST PHASE II - N515

MATCH LINE (PROPOSED TRAIL CENTER LINE) - SEE SHEET 21 - STATION: 13+ 16



CONSTRUCTION NOTES

- 1. INSTALL NEW CURB AND GUTTER (CG-6) VDOT ROAD AND BRIDGE STANDARDS (201.03)
- 1A. INSTALL NEW HEADER CURB (CG-2) VDOT ROAD AND BRIDGE STANDARDS (203.01)
- 1B. INSTALL NEW CURB AND GUTTER (C-2) ARLINGTON COUNTY STANDARD (R-2.0)
- 1C. INSTALL NEW CURB AND GUTTER (CG-7) VDOT ROAD AND BRIDGE STANDARDS (201.04)
- 1D. TAPER CURB (NOSE-DOWN) FROM 6" HEIGHT TO MEET EXISTING PAVEMENT GRADE (TAPER LENGTH = 4 FT)
- 1E. TAPER CURB (NOSE-DOWN) FROM 6" HEIGHT TO MEET EXISTING PAVEMENT GRADE (TAPER LENGTH = 1.5 FT)
- 2. INSTALL NEW SIDEWALK (S-5) (5' WIDE UNLESS OTHERWISE NOTED) ARLINGTON COUNTY STANDARD (R-2.0)
- 2A. INSTALL NEW HANDICAP RAMP (CG-12A OR MODIFIED CG-12A) VDOT ROAD AND BRIDGE STANDARDS (203.06), SEE SHEETS 3A AND 25-28 FOR DETAILS
- 2B. INSTALL NEW HANDICAP RAMP (CG-12B OR MODIFIED CG-12B) VDOT ROAD AND BRIDGE STANDARDS (203.07), SEE SHEETS 3A AND 25-28 FOR DETAILS
- 3. INSTALL NEW ASPHALT TRAIL, SEE SHEET 3 FOR TYPICAL DETAIL
- 3A. INSTALL NEW ASPHALT END TREATMENT AT OUTLET OF CURB AND GUTTER, SEE SHEET 4 FOR DETAIL
- 4. REMOVE EXISTING FIRE HYDRANT, VALVE BOX, & CAP 6" LINE.
- 4A. CONNECT TO EXISTING 6" WATERMAIN BY 6"x6" TAPPING SLEEVE AND VALVE OR BY SLEEVE IN 6"x6" TEE.
- 4B. INSTALL NEW FIRE HYDRANT, 6" GATE VALVE & VALVE BOX, AND 6" OF 6" WATER SERVICE LINE (INCLUDES WATER LINE BETWEEN MAIN AND FIRE HYDRANT VALVE, AND BETWEEN FIRE HYDRANT VALVE AND FIRE HYDRANT.
- 4C. ADJUST EXISTING WATER VALVE TO NEW GRADE
- 5. INSTALL STANDARD PRIVATE ENTRANCE (PE-1) VDOT ROAD AND BRIDGE STANDARDS (602.02)
- 6. REMOVE 'MANHOLE WITH THROAT' TOP AND REPLACE WITH PRECAST TOP (T-MH-2) VDOT ROAD AND BRIDGE STANDARDS (103.09)
- 8. MATCH EXISTING ROADWAY SURFACE
- 8A. MATCH EXISTING C&G AND/OR SIDEWALK/TRAIL
- 8B. MATCH EXISTING HEADER CURB
- 11. ADJUST EXISTING TRAFFIC SIGNAL JUNCTION BOX TO NEW GRADE
- 12. RELOCATE UTILITY POLE, LUMINAIRE, AND ALL GUYS (BY OTHERS). ARLINGTON COUNTY STANDARD (R-5.0)
- 12A. REMOVE UTILITY POLE, LUMINAIRE, AND ALL GUYS (BY OTHERS)
- 12B. RELOCATE UNDERGROUND ELECTRICAL LINE (BY OTHERS)
- 13. INSTALL FLARED END SECTION (ES-2) VDOT ROAD AND BRIDGE STANDARDS (102.3)

- 13A. INSTALL CULVERT OUTLET PROTECTION (EC-1) CLASS A1-TYPE A, VDOT ROAD AND BRIDGE STANDARDS (114.01)
- 13B. EXISTING 24" CMP STORM SEWER REMAIN INTACT AND UNDISTURBED DURING CONSTRUCTION. THE EXISTING 8" HDPE PIPE FROM THE OUTLET OF THE EXISTING 24" CMP TO STRUCTURE 12717 SHALL BE REMOVED.
- 20. TRANSITION LEAD WALK TO MEET PROPOSED SURFACE AND REPLACE WITH LIKE MATERIALS
- 25. INSTALL NEW RETAINING WALL (RW-2) VDOT ROAD AND BRIDGE STANDARDS (401.01), SEE SHEET 3 FOR ALIGNMENT AND PROFILE
- 29. REINSTALL ARLINGTON HEIGHTS NEIGHBORHOOD SIGN IN NEW LOCATION AFTER TRAIL CONSTRUCTION IS COMPLETE. SIGN POSTS SHALL BE INSTALLED 30 INCHES DEEP WITH CONCRETE FOOTING. CONTRACTOR IS RESPONSIBLE FOR SAFELY STORING SIGN AND TWO POSTS DURING CONSTRUCTION OF THE ENTIRE PROJECT.
- 30. RELOCATE EXISTING BUS SHELTER, SEE SHEET 3 FOR BUS SHELTER PAD DETAIL
- 31. INSTALL PROPOSED HANDRAIL HR-1 TYPE II, SEE SHEET 4 FOR DETAIL
- 32. THE GRADED TRAIL SHOULDER IN THIS AREA SHALL BE 5' WIDE MINIMUM WITH A 6:1 MAX CROSS SLOPE

- 40. IMPROVEMENTS CONSTRUCTED BY OTHERS AS PART OF COUNTY PROJECT #D185. AS BUILTS SHALL BE OBTAINED PRIOR TO PROJECT CONSTRUCTION SO THAT PROPOSED TIE-IN ELEVATIONS SHOWN CAN BE CONFIRMED OR ADJUSTED AS NEEDED.
- 41. IMPROVEMENTS CONSTRUCTED BY OTHERS AS PART OF COUNTY PROJECT #T855. PROPOSED TIE-IN ELEVATIONS SHOWN REFLECT AS-BUILT CONDITIONS FROM A 04/27/2018 FIELD SURVEY.

ADDITIONAL NOTES:

- SEE E & S PLAN ON SHEETS 10 & 11 FOR THOSE EXISTING TREES TO BE PROTECTED OR REMOVED.
- TEST HOLE DATA FOR TEST HOLES SHOWN WILL BE MADE AVAILABLE BY THE COUNTY PROJECT OFFICER UPON CONTRACTOR REQUEST.
- WHERE NEW ASPHALT SECTION MEETS EXISTING PAVEMENT, CONTRACTOR SHALL USE THE ASPHALT PAVEMENT WIDENING DETAIL (WP-2) VDOT ROAD AND BRIDGE STANDARDS (303.02).
- EXISTING UNDERDRAINS IF LOCATED SHALL BE RECONNECTED PER VDOT SPECIFICATION 501.

NOTE:

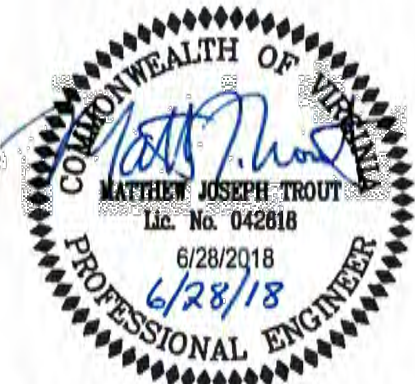
PLAN VIEW PROVIDED AT 10-SCALE FOR CLARITY. PROFILE ON SHEETS 23 AND 24 PROVIDED AT TYPICAL 25-SCALE.



DEPARTMENT OF ENVIRONMENTAL SERVICES

FACILITIES & ENGINEERING DIVISION
ENGINEERING BUREAU
2100 CLARENDON BOULEVARD, SUITE 813
ARLINGTON, VA 22201
PHONE: 703.228.3629
FAX: 703.228.3606

COPYRIGHT © 2016 ARLINGTON COUNTY VIRGINIA - ALL RIGHTS RESERVED



Approvals	Date
QUALITY CONTROL ENGINEER	7/2/18
CONSTRUCTION MANAGEMENT SUPERVISOR	5/1/18
WATER, SEWER, STREETS BUREAU CHIEF	8/3/18
TRANSPORTATION DIRECTOR	7/2/18
PROJECT MANAGER	7/2/18

REVISIONS DATE

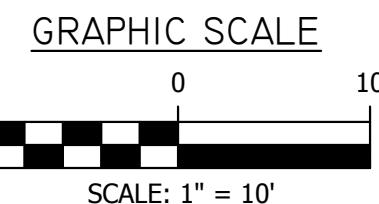
REVISIONS	DATE

PROJECT NAME AND LOCATION
S IRVING ST/
ARLINGTON BLVD PHASE II
PROPOSED TRAIL PLAN
ARLINGTON BLVD TRAIL
(S FILLMORE ST TO S IRVING ST)
N515

DESIGNED: VS/CB
DRAWN: VS/CB
CHECKED: MJT
MISS UTILITY TRANSMITTAL #: 5165

FILENAME: N515-PD-PLAN.DWG
PATH: Q:\DATA\DESIGN\DRAWINGS
PLOTTED: MARCH 29 2019
PLOTTED BY: JILIN

SCALE Hor: 1" = 10'



SHEET 22 OF 38

S IRVING ST PHASE II - N515

